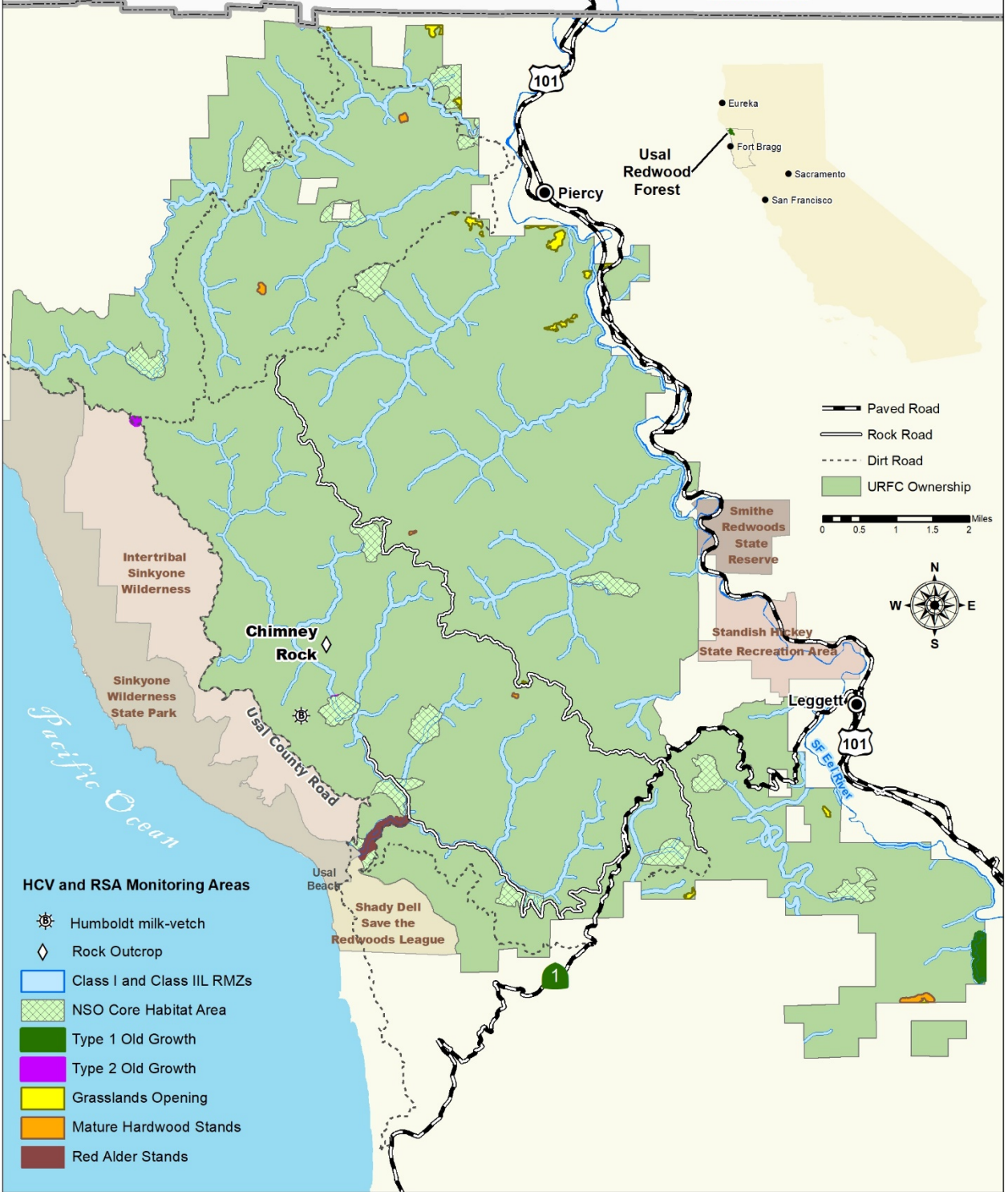


2018 High Conservation Value (HCV) and Representative Sample Area (RSA) Monitoring

	Classification: HCVF or RSA	Acres	2018 Monitoring Results
Type 1 Old Growth	HCV1	60	No change.
Type 2 Old Growth	HCV*	22	No change.
Grassland Openings	RSA	90	No change.
Humboldt milk-vetch	HCV3	0.25	No change.
Class I and Class II L RMZs	HCV1,4	3276	No change.
Mature Hardwood Stands	RSA	50	No change.
Significant Archaeological Sites	HCV6		No change.
NSO Core Habitat	HCV1	1433	Small change in acreage summary due to minor correction of habitat boundaries.
Red Alder Stands	RSA	76	No change.
Rocky Outcrops (Chimney Rock)	RSA	12	No change.

*These areas are not large enough to meet the FSC definition of Type 2 OG.

Usal Redwood Forest High Conservation Value and RSA Monitoring Areas



HCV and RSA Monitoring Areas

- Humboldt milk-vetch
- Rock Outcrop
- Class I and Class III RMZs
- NSO Core Habitat Area
- Type 1 Old Growth
- Type 2 Old Growth
- Grasslands Opening
- Mature Hardwood Stands
- Red Alder Stands