

## 2020 High Conservation Value (HCV) and Representative Sample Areas (RSA) Monitoring

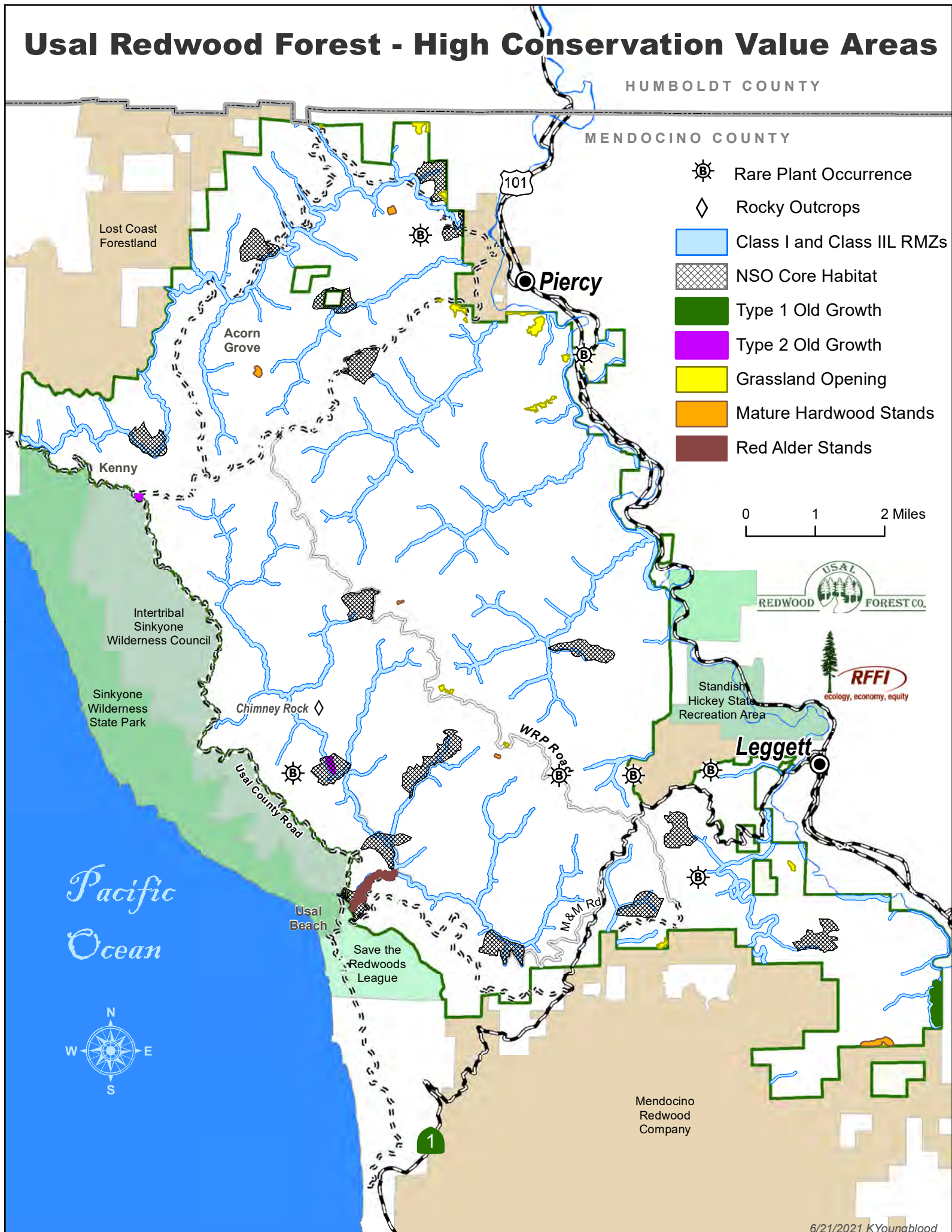
	Classification: HCVF or RSA	Acres	2019 Monitoring Results
Type 1 Old Growth	HCV1	60	No change.
Type 2 Old Growth	HCV*	22	No change.
Grassland Openings	RSA	103	No change.
Rare Plant Occurrences	HCV3	1.25	No change.
Class I and Class II L RMZs	HCV1,4	3858	No change.
Mature Hardwood Stands	RSA	45	Five acre decrease due to habitat realignment supported by field verification.
Significant Archaeological Sites	HCV6		No change.
NSO Core Habitat	HCV1	1521	88 acre increase due to new nest site observed in 2020. New core habitat area connected to existing 100 acre core area for MEN0099.
Red Alder Stands	RSA	76	No change.
Rocky Outcrops (Chimney Rock)	RSA	12	No change.

\*These areas are not large enough to meet the FSC definition of Type 2 OG.

# Usal Redwood Forest - High Conservation Value Areas

HUMBOLDT COUNTY

MENDOCINO COUNTY



- Rare Plant Occurrence
- Rocky Outcrops
- Class I and Class IIL RMZs
- NSO Core Habitat
- Type 1 Old Growth
- Type 2 Old Growth
- Grassland Opening
- Mature Hardwood Stands
- Red Alder Stands

0 1 2 Miles



Standish Hickey State Recreation Area

Leggett

Pacific Ocean



Mendocino Redwood Company