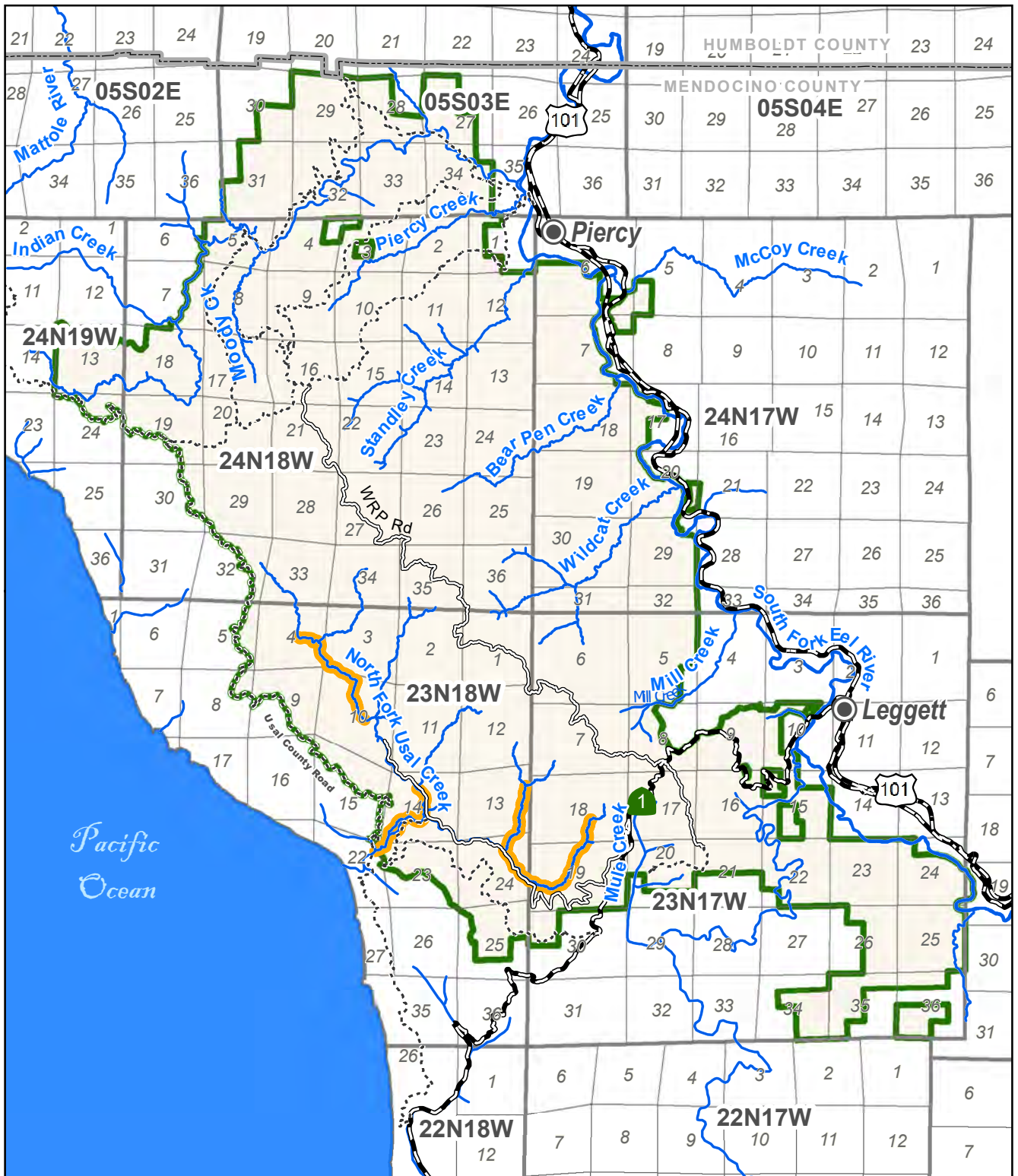


2020 URFC Fisheries Monitoring Report



Snorkle Surveys were conducted in the fall of 2020 along 3 miles of the South Fork and North Fork Usal Creek on Usal Redwood Forest. Eleven selected pools were sampled within this three-mile reach for Coho salmon presence/absence by fisheries biologist David Wright. Young-of-year steelhead were abundant, averaging 25 in each sampled pool and Coho salmon were absent in all pools observed.

During the winter of 2020/2021, spawning surveys were conducted on 7.6 miles of streams in the Usal Creek Watershed on Usal Redwood Forest. Spawning surveys resulted in zero observations of Coho salmon redds and zero adult Coho salmon but 143 Steelhead redds and 249 adult Steelhead were observed. Usal Creek streams used to support a healthy population of Coho salmon which have not been seen in the Usal watershed since 2013. Steelhead, however, appear to be abundant and young of year steelhead continue to find refuge in the shadowed pools created from large wood structures in the Usal watershed streams.

South Fork Eel River tributaries were not surveyed during the 2020/2021 spawning survey due to Covid 19 travel modifications.



2020/2021 Spawning Survey Reaches on Usal Redwood Forest

-  Spawning Reaches - Usal Creek Watershed
-  Usal Redwood Forest

