

2021 High Conservation Value (HCV) and Representative Sample Areas (RSA) Monitoring

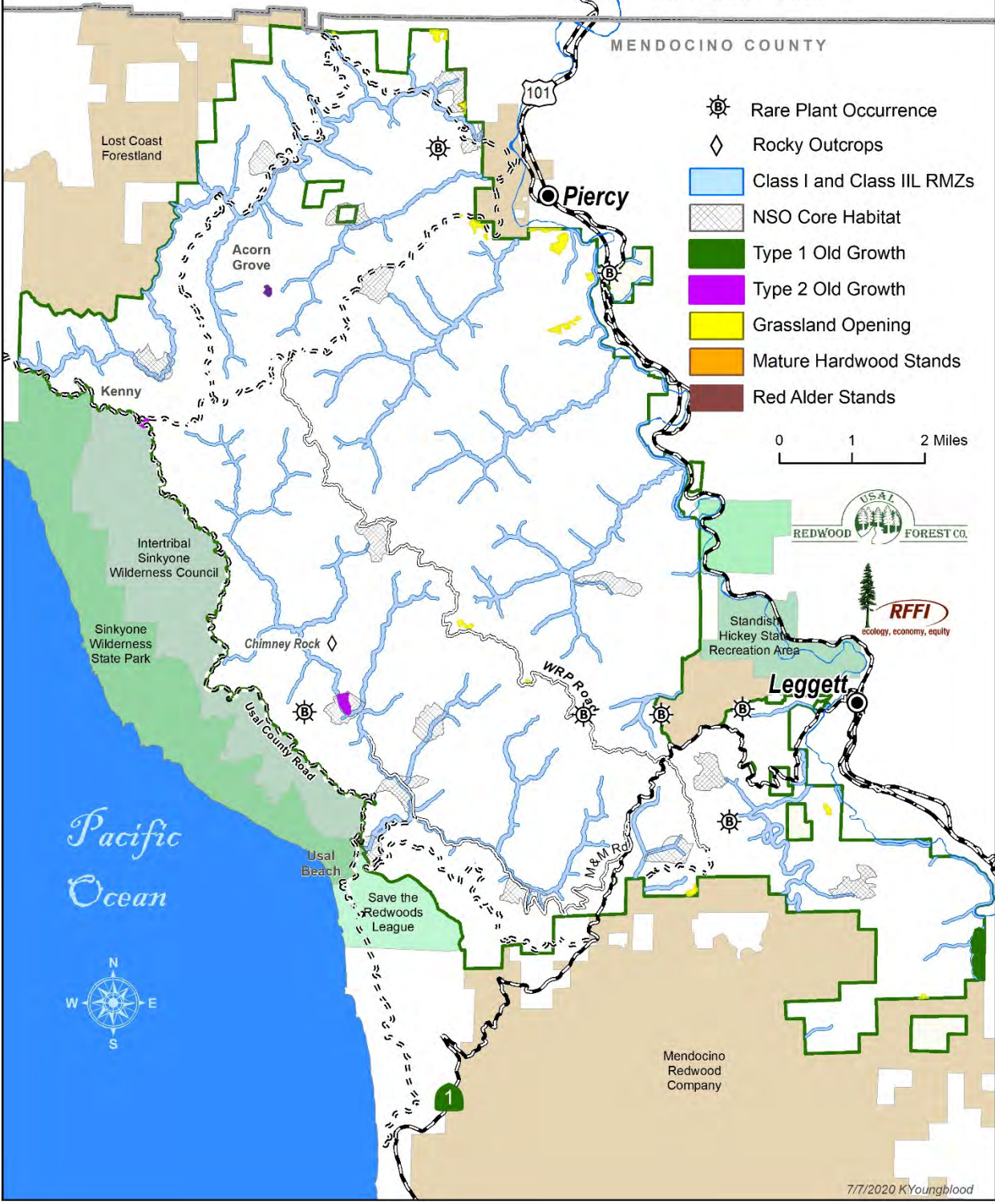
| | Classification: HCVF or RSA | Acres | 2021 Monitoring Results |
|----------------------------------|--------------------------------|--------------|-------------------------|
| Type 1 Old Growth | HCV1 | 60 | No change. |
| Type 2 Old Growth | HCV* | 22 | No change. |
| Grassland Openings | RSA | 103 | No change. |
| Rare Plant Occurrences | HCV3 | 1.25 | No change. |
| Class I and Class II L RMZs | HCV1,4 | 3858 | No change. |
| Mature Hardwood Stands | RSA | 45 | No change. |
| Significant Archaeological Sites | HCV6 | Confidential | No change. |
| NSO Core Habitat | HCV1 | 1521 | No change. |
| Red Alder Stands | RSA | 76 | No change. |
| Rocky Outcrops (Chimney Rock) | RSA | 12 | No change. |

*These areas are not large enough to meet the FSC definition of Type 1 OG.

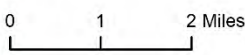
Usal Redwood Forest - High Conservation Value Areas

HUMBOLDT COUNTY

MENDOCINO COUNTY



- Rare Plant Occurrence
- Rocky Outcrops
- Class I and Class IIL RMZs
- NSO Core Habitat
- Type 1 Old Growth
- Type 2 Old Growth
- Grassland Opening
- Mature Hardwood Stands
- Red Alder Stands



Pacific Ocean

Mendocino Redwood Company